

Chester & Cheshire Travel Trade

Frequently Asked Questions

Q. Where can I drop off my passengers in Chester?

A. There are new drop-off restrictions in Chester city centre, please note drop-offs are limited to 10 minutes. Current drop-off points are:

- Vicar's Lane (westbound, CH1 1QU)
- Grosvenor Street (southbound, CH1 2DD)
- Pepper Street (eastbound, CH1 1DW)
- Little Roodee Car Park (Castle Drive, CH1 1SL)
- Foregate Street (eastbound, CH1 1HE)
- *Hunter Street (CH1 2AR)

*Coaches can use the space in the old bus station (Hunter Street) until further notice however they are not permitted to enter the new bus station on Gorse Stacks

Q. Where can I park my coach in Chester?

A. The Little Roodee coach and car park

- Up to three hours - £5.50
- Three to six hours - £8
- Over six hours - £10
- Arrivals after 5pm - £5
- *Multiple Access - £10

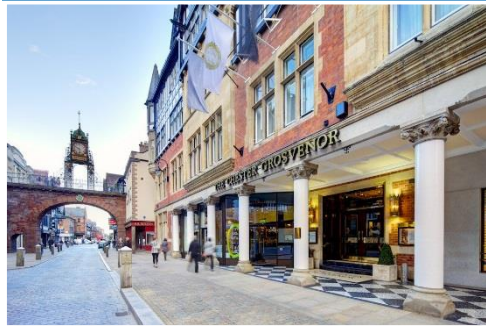
*If you wish to obtain a multiple access ticket, you must first take a ticket from the entry machine, this can then be discarded and you should collect a 'Coach Ticket' from the payment machine (£10). You will also be issued with another ticket allowing you to enter and exit the Roodee for the remainder of the day.

Large vehicles which exceed the size of a standard marked bay should pay for the number of spaces occupied.

The car park is open 24 hours; vehicles may be parked overnight but should be moved by 9am the following morning.

There are on site toilet facilities for passengers and coach drivers. There is a radar key toilet situated outside of the building.

When the fair arrives in May, alternative coach parking is available at the Park & Ride on Wrexham Road.



Chester & Cheshire Travel Trade

Q. Where are the public toilets located in Chester?

A. Public toilets can be found in the following locations:

- Grosvenor Shopping Centre (accessed by Pepper St)
- Princess Street (under the market) 8am – 6pm
- Frodsham Street 8am – 6pm
- The Groves (Near Suspension Bridge)
- Little Roodee (on the coach/car park)

Q. Where can I buy souvenirs?

A. Chester Visitor Information Centre - they sell maps, publications, and souvenirs.

Address: Chester VIC, Town Hall, Northgate St, Chester, CH1 2HJ

Q. Which venues can cater for large groups – for accommodation and eating out?

A. Please contact Marketing Cheshire, we provide a FREE service which searches appropriate venues for availability and rates.

Call 01244 405606 or email a.shacklady@marketingcheshire.co.uk

Alternatively, visit our travel trade website:

<http://www.visitchester.com/groups>

Q. Where can I find out more information about accessibility in Chester?

A. Cheshire West and Chester Council produce a booklet – *Chester City Centre Access*. Here, you will find information about the Shopmobility Scheme, gaining access to the Rows, parking, and toilets. Copies of this leaflet can be obtained from the Visitor Information Centre.

Alternatively, contact DIAL House Chester

Tel: 01244 345655,

Textphone: 01244 315122

Email: contactus@dialhousechester.org.uk

Address: DIAL House Chester, Hamilton Place, Chester, CH1 2BH

You will find more information online at www.disabledgo.com



Chester & Cheshire Travel Trade

Q. What events are taking place in Chester/Cheshire?

For information on Chester go to www.visitchester.com/whats-on

For information on Cheshire go to www.discovercheshire.com/whats-on

Major events in Chester and Cheshire include:

May – September – **Chester Races**

July – **RHS Flower Show Tatton Park**

November – December – **Christmas in Chester & Cheshire**

Q. Where can I book a private guided tour and how much are they?

A guided tour of Chester is the best way of seeing the city. Tours generally last for approximately 1.5 hours so even if you are in Chester for a few hours make the most of your time here and let one of our experienced guides show you all the highlights of this beautiful city.

All tours are led by fully qualified Blue and Green Badge Guides.

Private guided tours can be booked by emailing:

chesterwalkingtours@gmail.com

A variety of public sightseeing and themed tours depart regularly from Chester Visitor Information Centre on a daily basis for both groups and individual visitors. For more info visit:

www.chestertours.org.uk

www.ghostcity.co.uk

www.romantoursuk.com

Q. Who can I contact for more information?

Groups are very important to us in Chester and Cheshire and we want to make planning your visit as easy as possible.

For more information, refer to our groups guide and dedicated groups website www.visitchester.com/groups

Alternatively, you can contact us on 01244 405600 or email groups@marketingcheshire.co.uk



Chester & Cheshire
Travel Trade

City Centre Map

